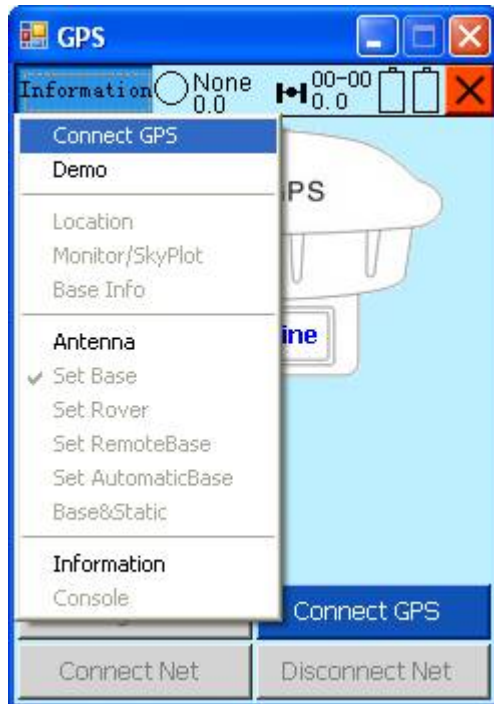


Guide to Bluetooth Connection

1. turn on the receiver 110, wait until it says “tracked”
2. double press “F” button quickly, you will hear “static mode”. Then single press the “F” button to choose the mode from “Static”, “Rover”, and “Base” in turn. Here you can choose it as “Rover” or “Base” and press “I” button once to confirm this mode setting
3. afterwards, open the “Hi-RTK”



4. enter “2.GPS”



5. set as below when you use Dolphin 9500 controller

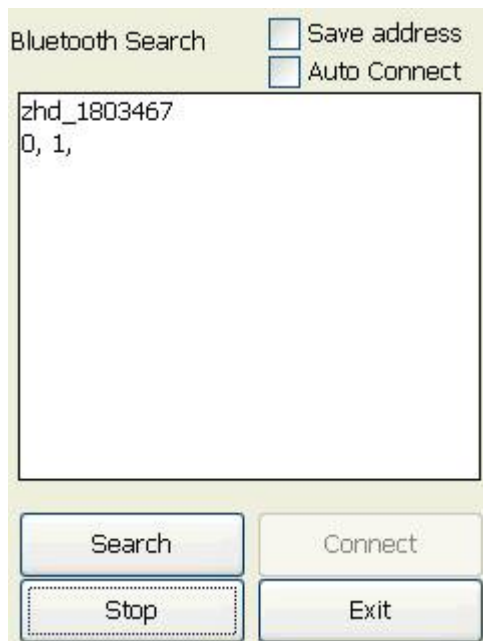


6. now press "Connect", you will go to the below interface

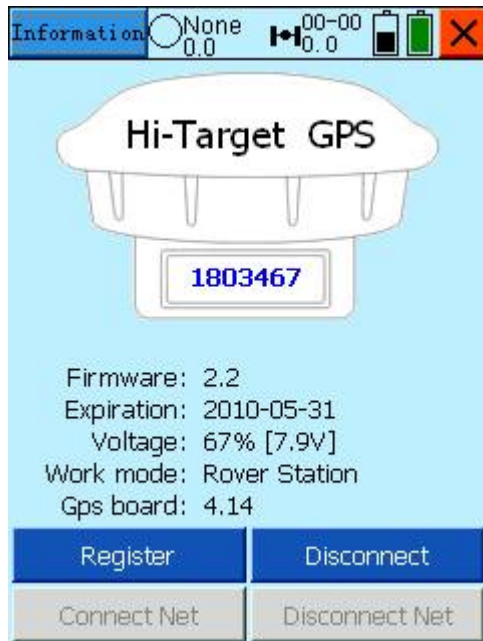
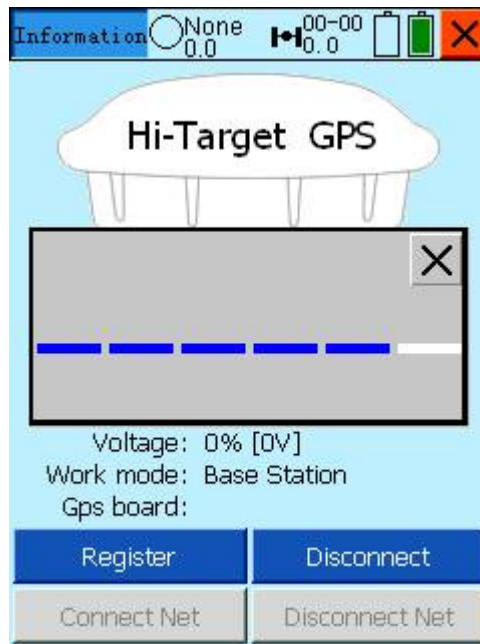
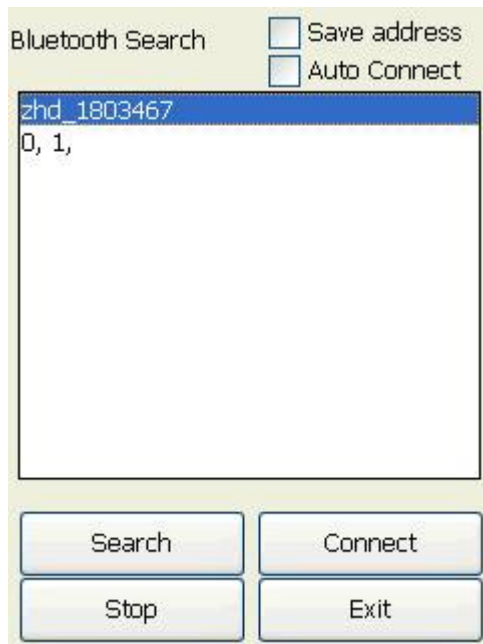


All the S/N showed in it as above is the previous instruments that you have connected or searched

7. now you should click "Search" firstly to find the around bluetooth. When it has found your receiver S/N, you can do "Stop"



8. now you click your receiver S/N to choose it and then click "Connect"



So in this way, the bluetooth connection between V8/V9 receiver and the controller with Hi-RTK software is ok.